



Technical Service Information

CHRYSLER 45RFE NEW SOLENOID PACK

CHANGE: A new design Solenoid pack was introduced as a running change in the 2004 model year.

REASON: Greatly reduced operational noise by using internal solenoids.

PARTS AFFECTED:

- (1) SOLENOID PACK - Totally re-designed casting with changes in the worm track area as shown in Figure 1.
- (2) SOLENOID BODY SCREEN AND GASKET ASSEMBLY - Changed to accommodate the changes in the Solenoid Pack and is illustrated in Figure 2.
- (3) TRS/ AND 23 WAY CONNECTOR - Changed to accommodate internal solenoids. See Figures 3 and 4 for early design and Figures 5 and 6 for updated design.
- (4) RANGE SENSOR SELECTOR PLATE - The pocket for the T41 pin was made deeper and is illustrated in Figure 7.

SERVICE INFORMATION:

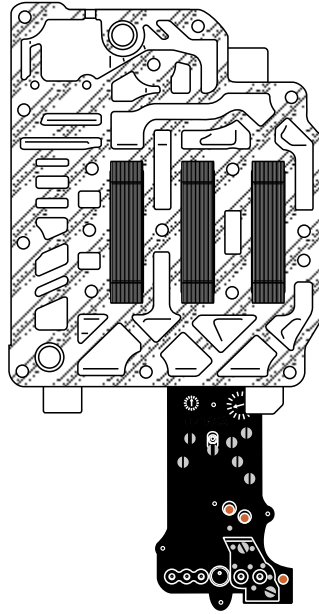
Solenoid Pack (1999-2003 with updated range sensor plate).....	68002342AB
Solenoid Pack (2004 - up without updated range sensor plate).....	5170877AC

INTERCHANGEABILITY

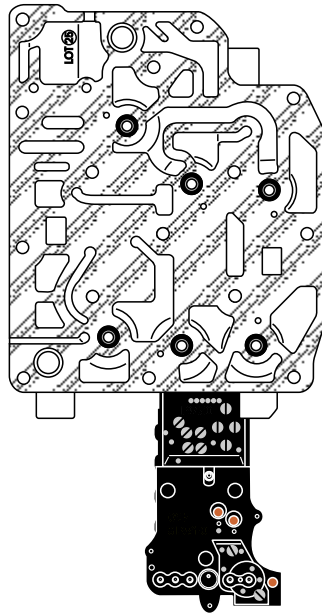
The new design Solenoid Pack, Gasket and range sensor plate will retro-fit back on previous models.

Special Note: The 1999 - 2003 range sensor plate can be modified and used with the updated Solenoid Pack. by making the T41 pocket .040" deeper (Figure 7).

EARLY SOLENOID PACK



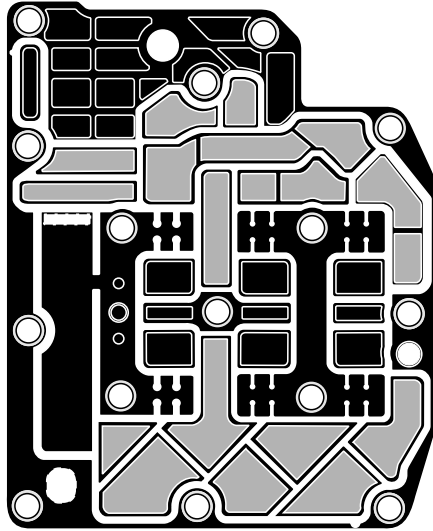
LATE SOLENOID PACK



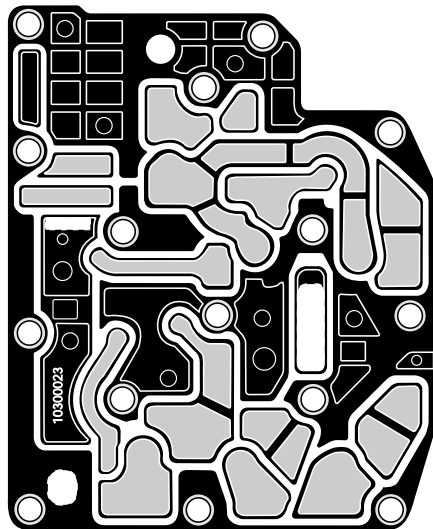
Copyright © 2007 ATSG

Figure 1

EARLY GASKET



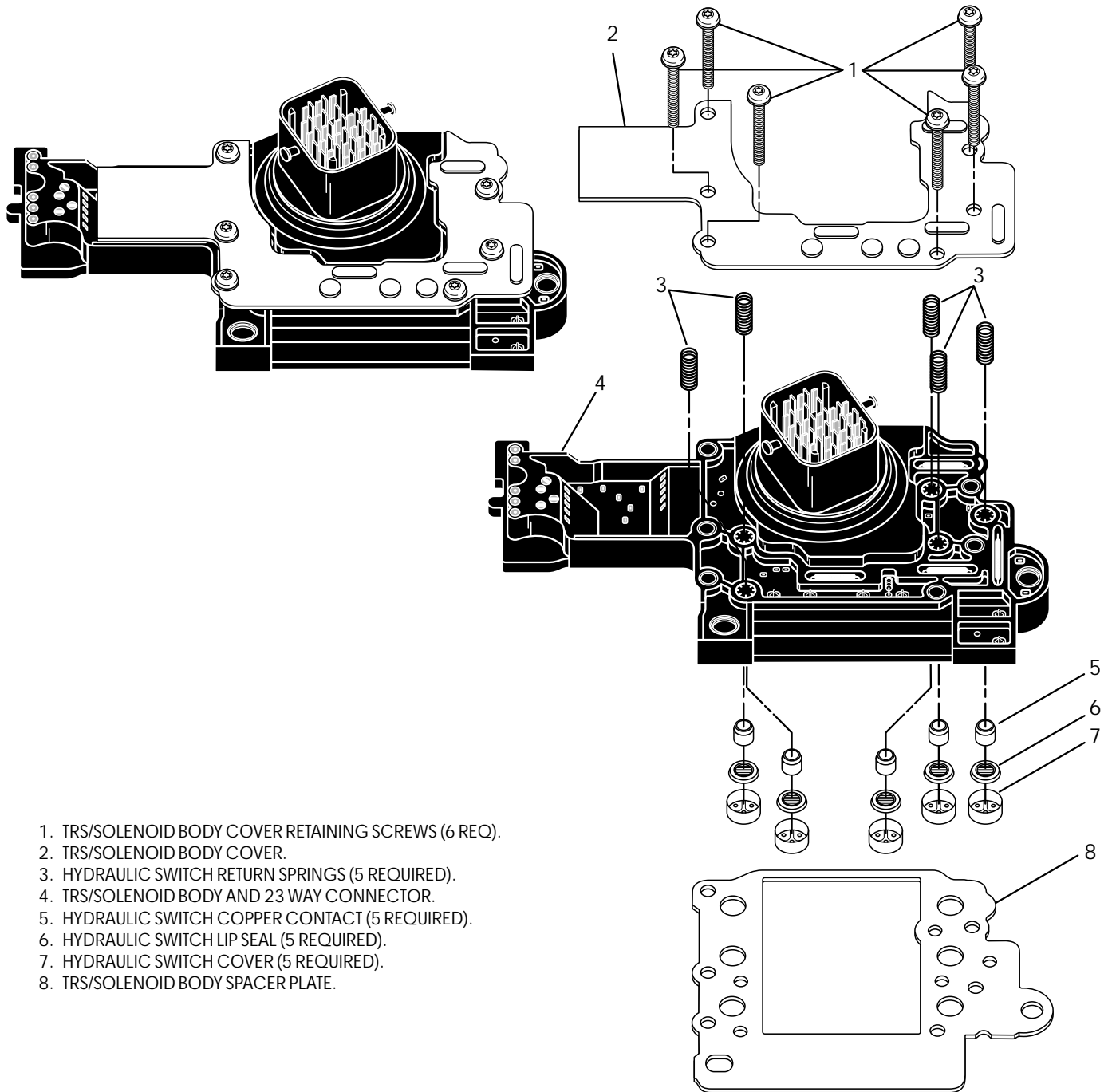
LATE GASKET



Copyright © 2007 ATSG

Figure 2

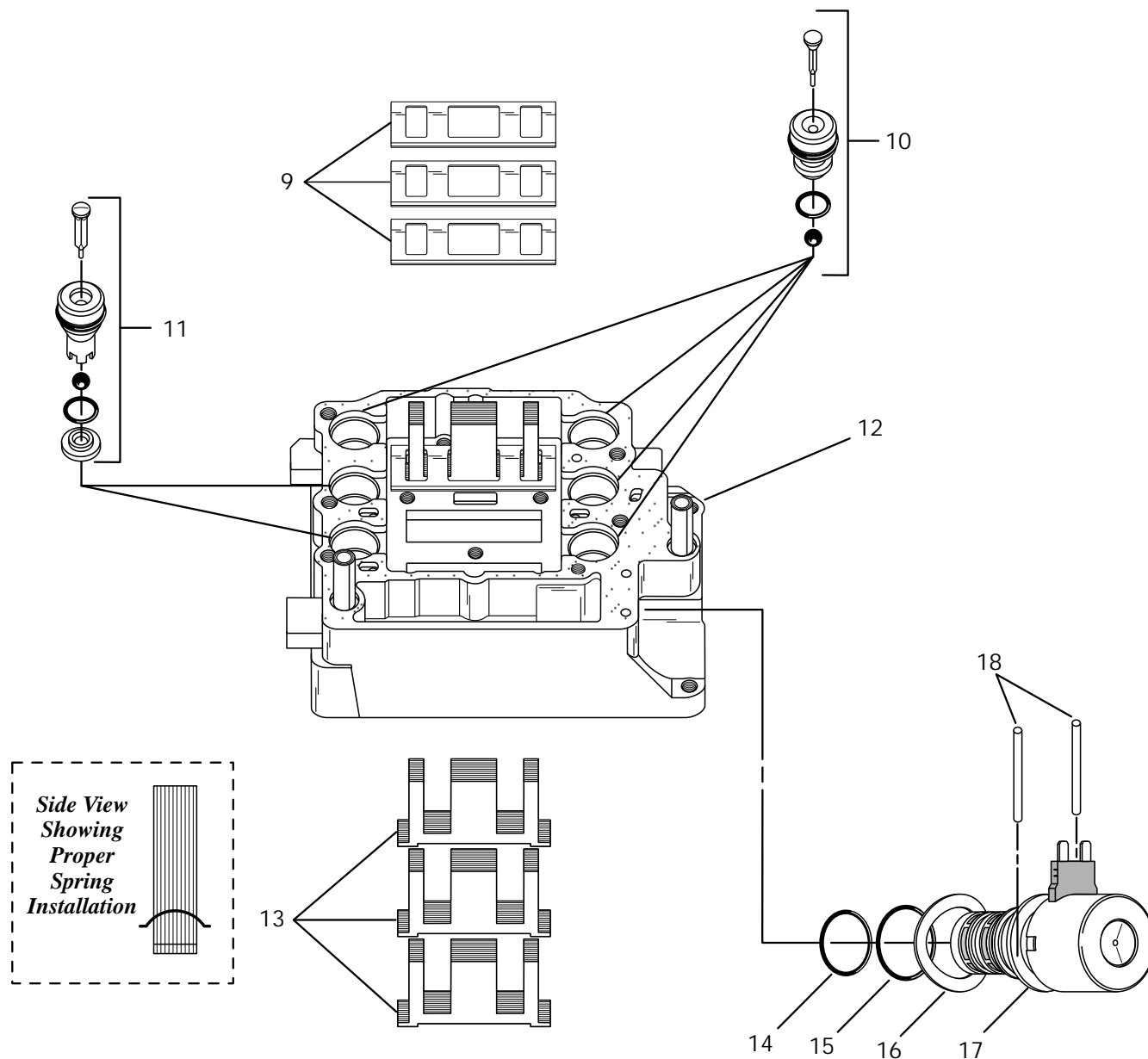
EARLY TRANSMISSION RANGE SENSOR EXPLODED VIEW



Copyright © 2007 ATSG

Figure 3

EARLY SOLENOID PACK EXPLODED VIEW

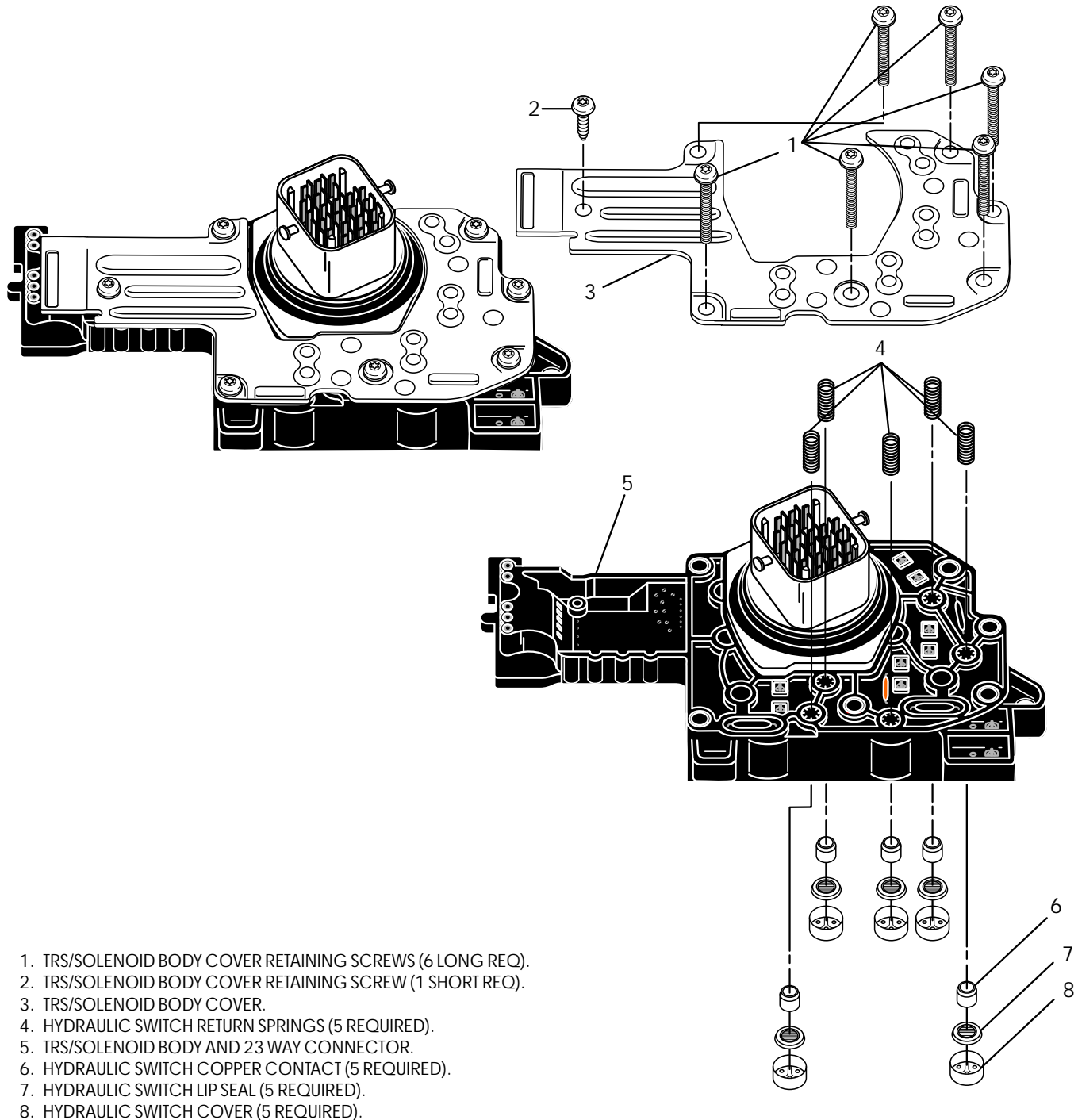


- 9. SOLENOID RETENTION SPRINGS (3 REQUIRED).
- 10. SOLENOID NEEDLE VALVE/SEAT ASSEMBLY (4 REQUIRED)
LR/CC, OD, 2ND CLUT, 4TH CLUT SOLENOIDS.
- 11. SOLENOID NEEDLE VALVE/SEAT ASSEMBLY (2 REQUIRED)
MULTI-SELECT AND UNDERDRIVE SOLENOIDS.
- 12. SOLENOID NEEDLE AND SEAT BODY.
- 13. SHIFT SOLENOID POLES (3 REQUIRED).
- 14. LINE PRESSURE SOLENOID SMALL "O" RING.
- 15. LINE PRESSURE SOLENOID LARGE "O" RING.
- 16. LINE PRESSURE SOLENOID WAVE WASHER.
- 17. LINE PRESSURE SOLENOID.
- 18. LINE PRESSURE SOLENOID RETAINING PINS (2 REQUIRED).

Copyright © 2007 ATSG

Figure 4

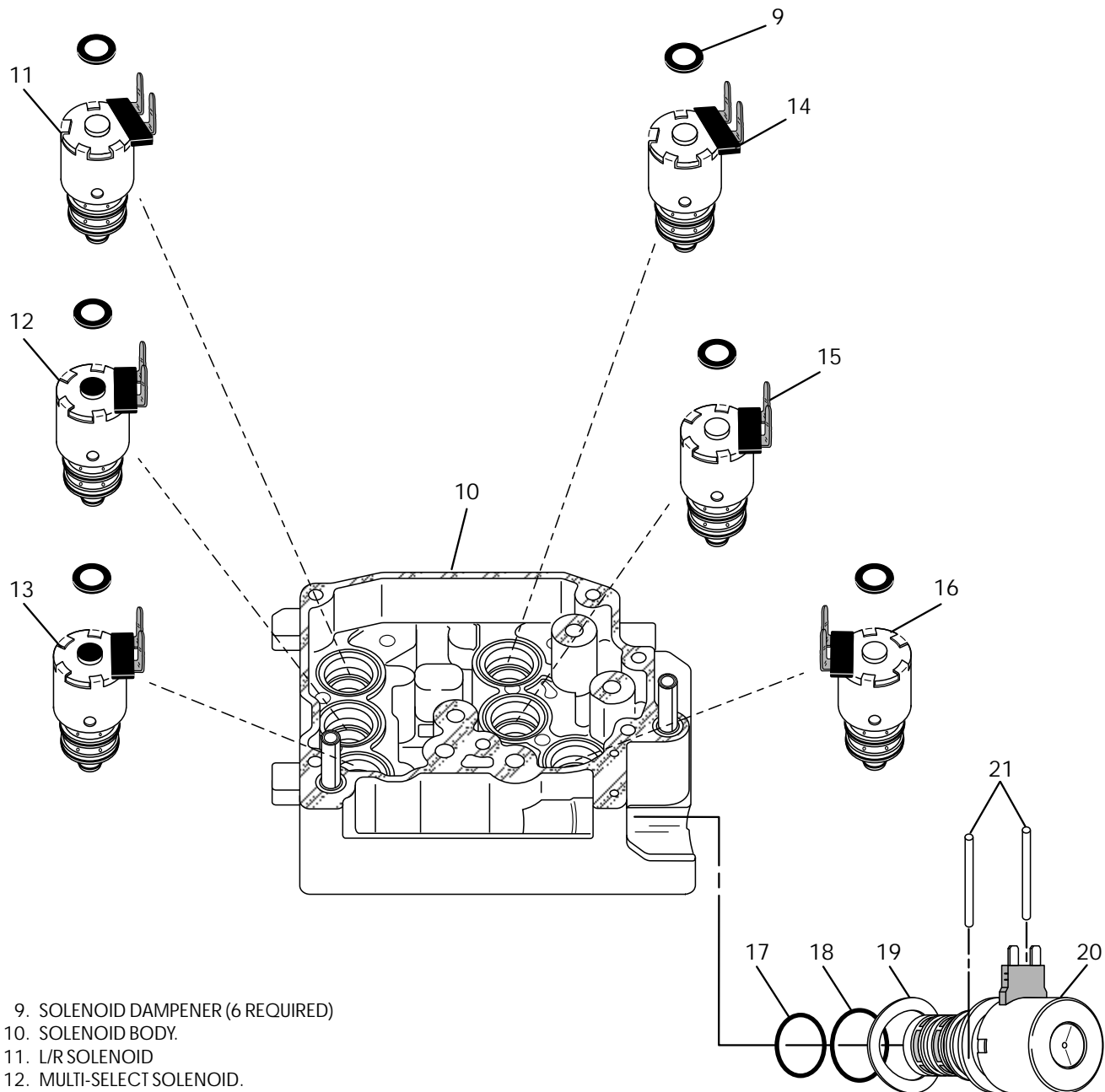
LATE TRANSMISSION RANGE SENSOR EXPLODED VIEW



Copyright © 2007 ATSG

Figure 5

LATE SOLENOID IDENTIFICATION

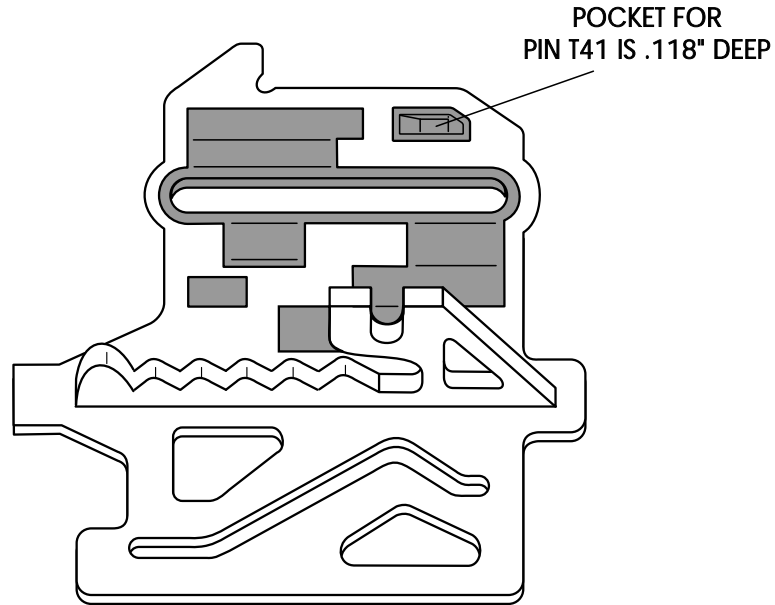


- 9. SOLENOID DAMPENER (6 REQUIRED)
- 10. SOLENOID BODY.
- 11. L/R SOLENOID
- 12. MULTI-SELECT SOLENOID.
- 13. U/D SOLENOID
- 14. O/D SOLENOID
- 15. 4TH CLUTCH SOLENOID
- 16. 2ND CLUTCH SOLENOID
- 17. LINE PRESSURE SOLENOID SMALL "O" RING
- 18. LINE PRESSURE SOLENOID LARGE "O" RING
- 19. LINE PRESSURE SOLENOID WAVE WASHER
- 20. LINE PRESSURE SOLENOID
- 21. LINE PRESSURE SOLENOID RETAINING PINS (2 REQUIRED)

Copyright © 2007 ATSG

Figure 6

EARLY RANGE SENSOR PLATE



LATE RANGE SENSOR PLATE

